

Instrucciones de instalación Installation steps

Introducción Este manual muestra los pasos para la correcta instalación de RokadelBoske en diferentes ubicaciones. En el caso de uso público se deberá reforzar el anclaje de la Roka fijándolo a una solera de hormigón o lastrando la pieza. En el caso de uso infantil la Roka deberá contar con un área de seguridad perimetral cuyo límite distará 1 m como mínimo desde cualquier punto de la Roka, este área de seguridad será un espacio libre de otros elementos. Se detallan a continuación cuatro opciones para instalación de RokadelBoske.

Introduction This manual shows the installation steps for RokadelBoske in different situations. In case of public use the Roka needs a reinforced anchorage fixing it to a concrete base or ballasting it. In case of children's playground it must exist a security area around the Roka of at least 1 m from any point of it. This security area must be free of any element. Next lines give four options for the installation of RokadelBoske.

- 1.- Jardín privado. Private Garden.
- 2.- Parque público (con lastre). Public garden (with ballast).
- 3.- Parque público (con solera de hormigón). Public park (with concrete base)
- 4.- Parque infantil con pavimento elástico. Playground with soft floor.

Características Characteristics

Peso: 20 kg

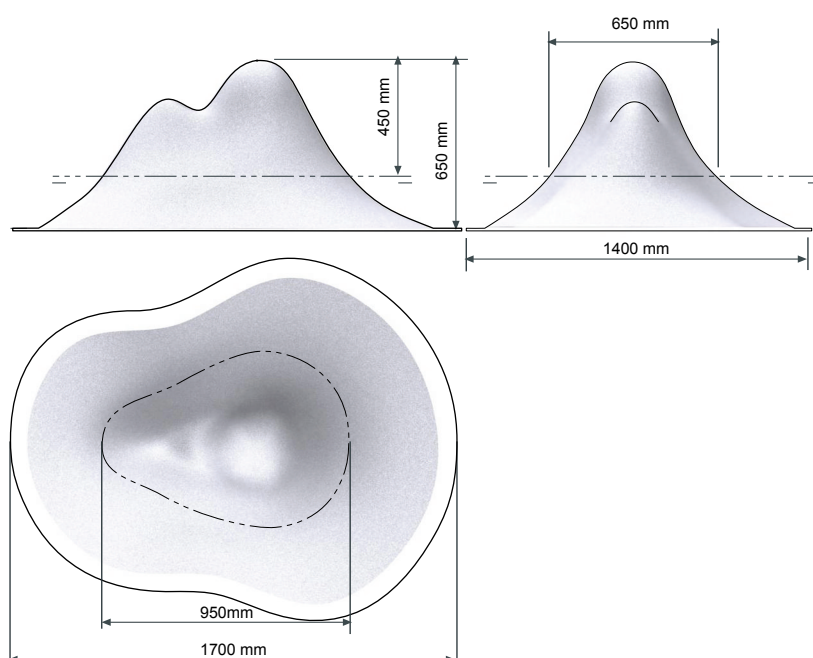
Weight: 20 kg

Material: Resina de poliéster reforzada con fibra de vidrio

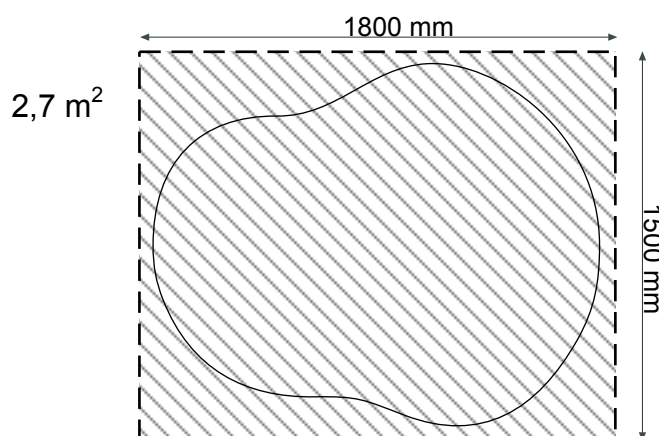
Material: Polyester resin reinforced with fiber-glass.

Dimensiones

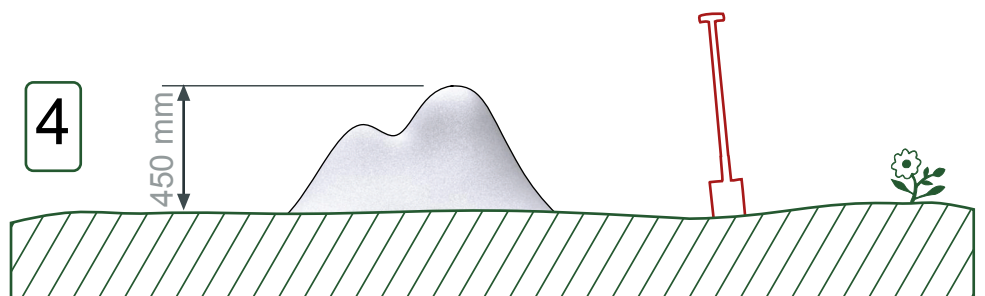
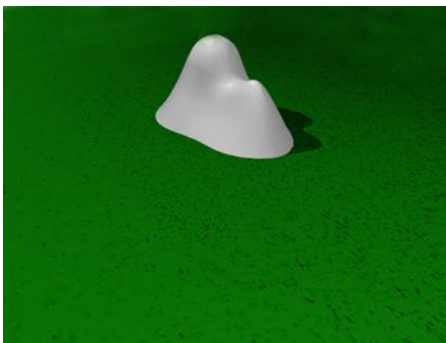
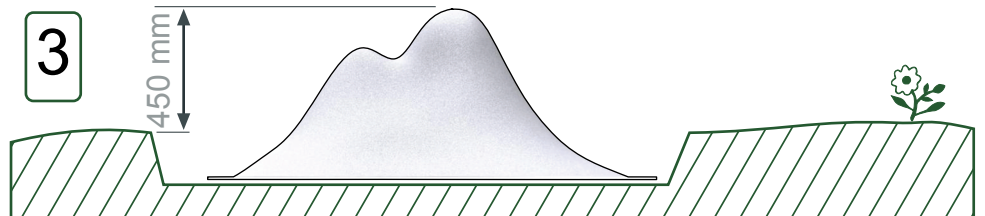
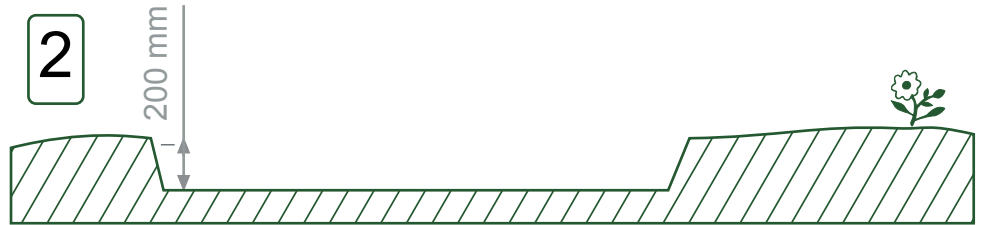
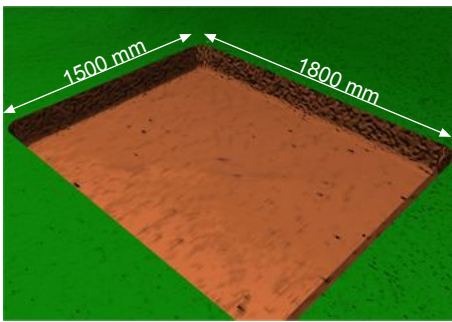
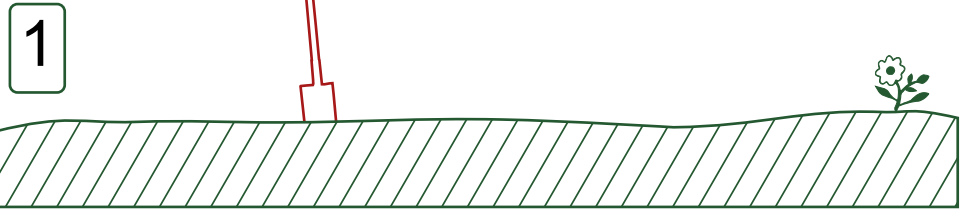
Dimensions



Superficie para instalación Installation area



1 Jardín privado Private garden

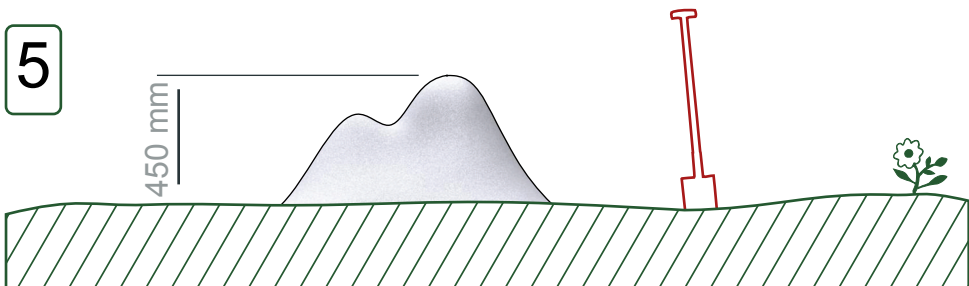
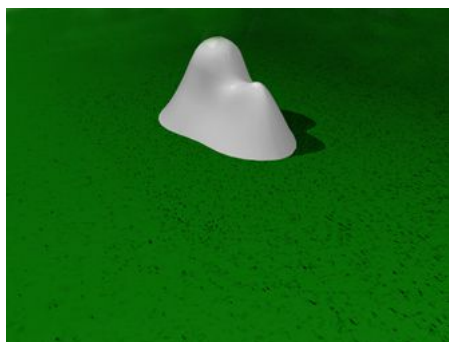
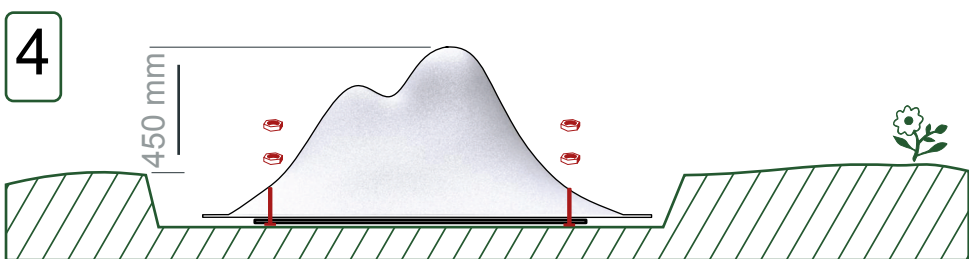
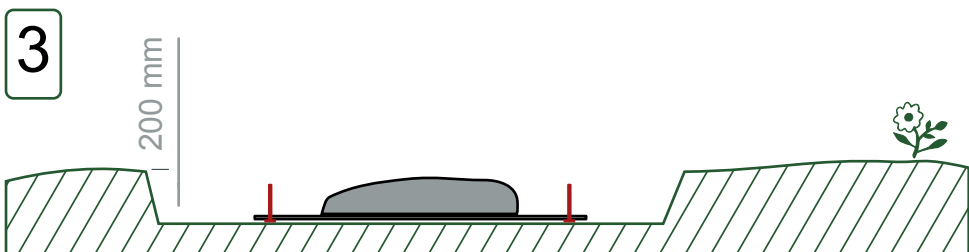
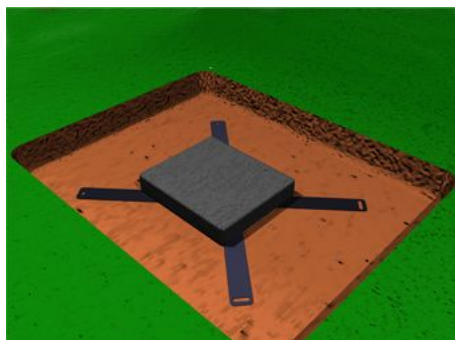
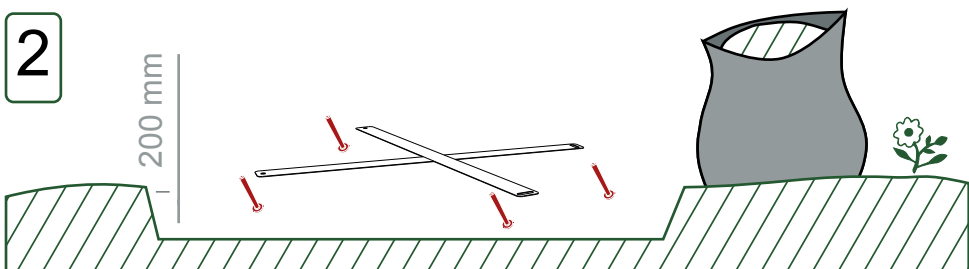
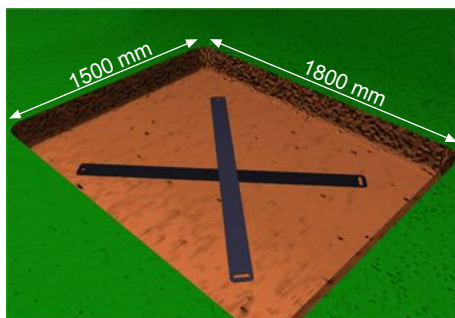
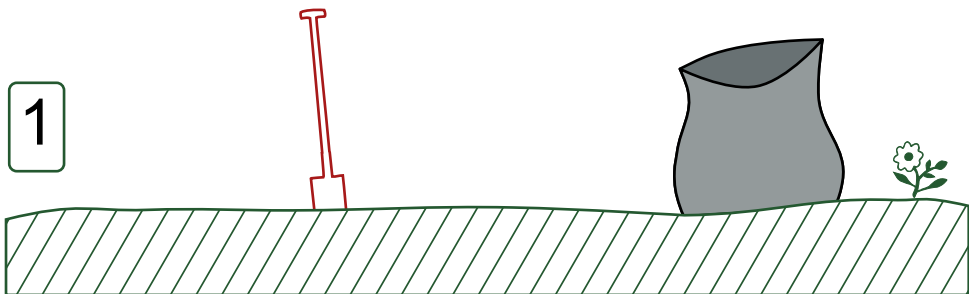


2 Parques públicos (con lastre)

Public areas (with ballast)

 x 4 M5
 x 4 Tornillo/Screw 100mmM5
 x 2
 x 1





3 Parque público (solera de hormigón)

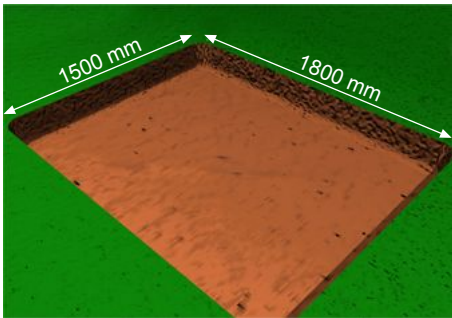
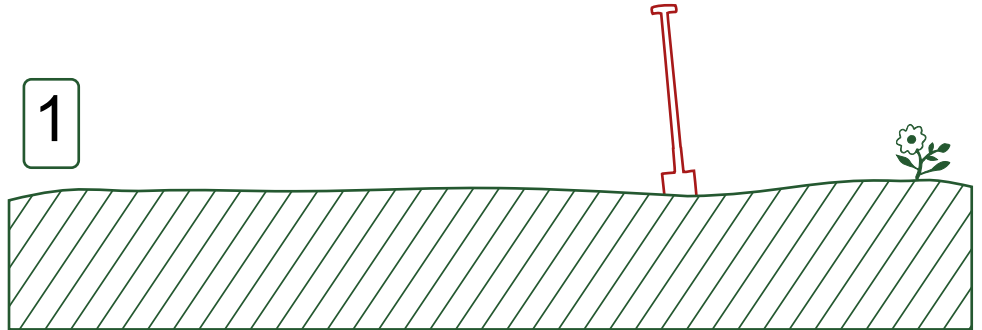
Public park (concrete base)

x 8

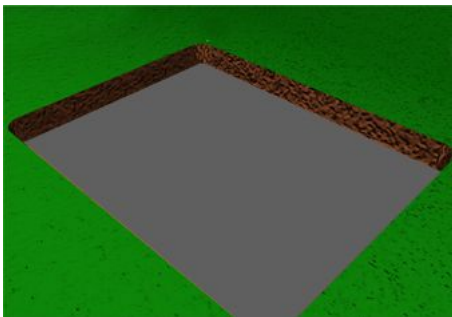
Expansivo Hormigón/Screw 100mmM5



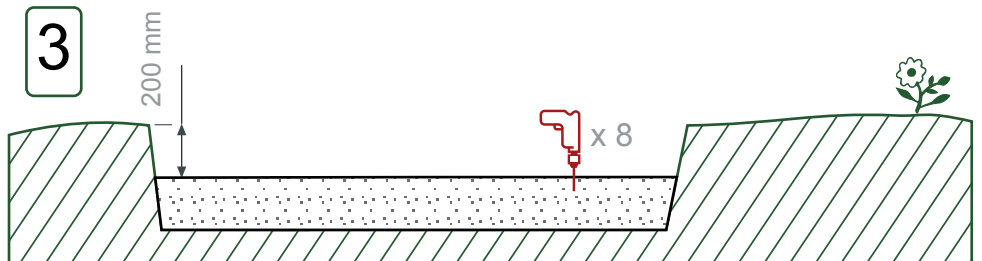
1



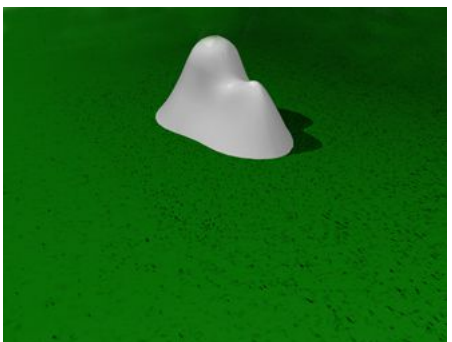
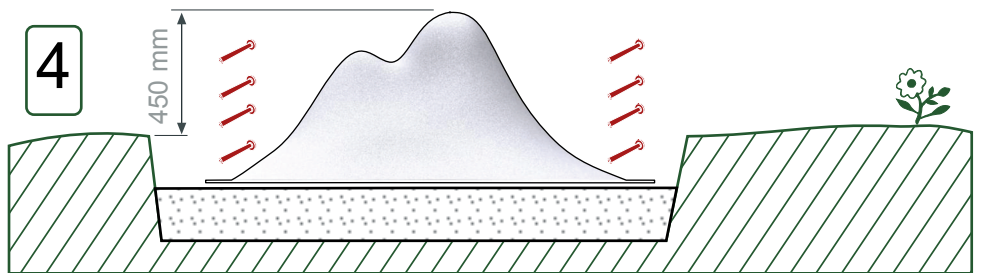
2



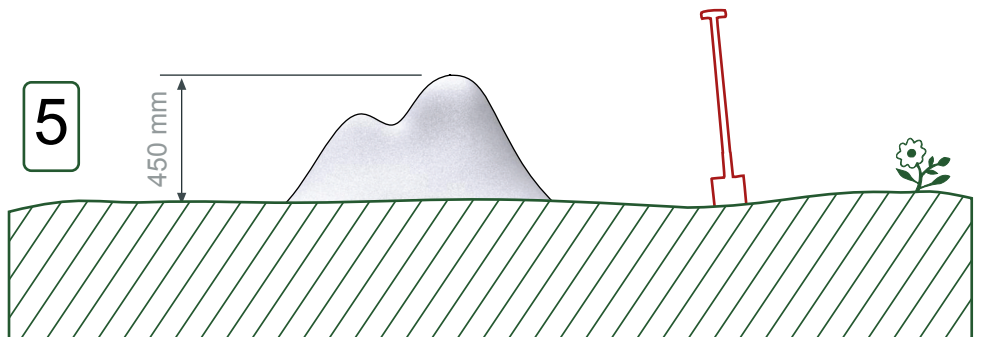
3




4

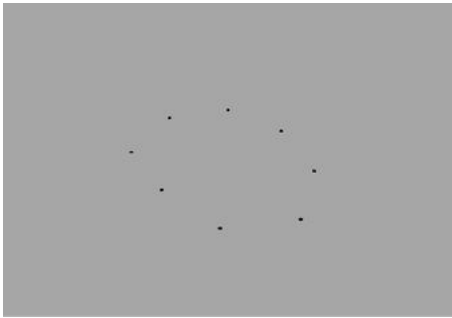


5

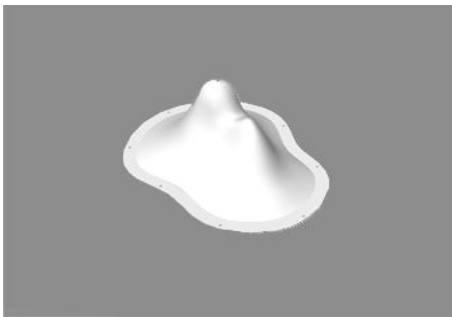
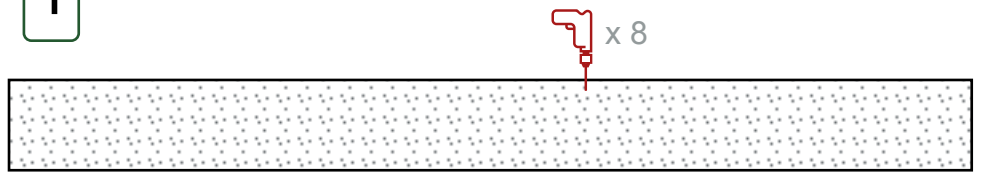


4 Parque infantil Playground

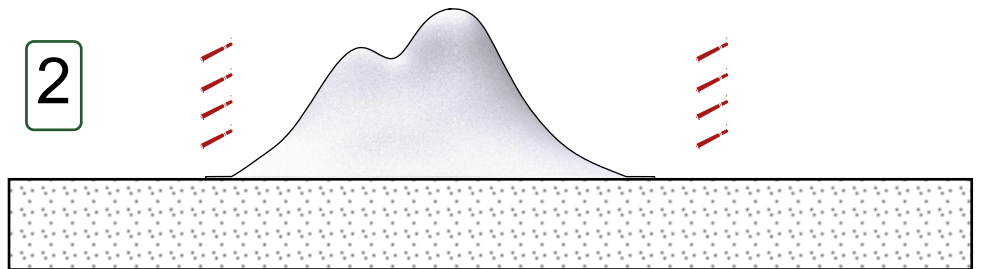
 x 8 Expansivo Hormigón/Screw 100mmM5



1



2



3

